

BEAD WEAVING

Golden glory bracelet



Stitch up fun components with two-hole triangles and lentils in soft, glowing colors.

designed by **Nichole Starman**

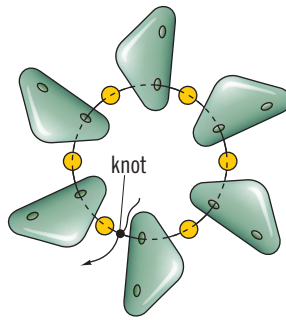
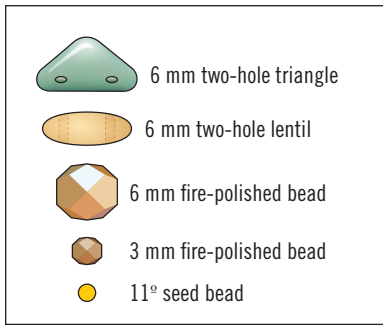


FIGURE 1

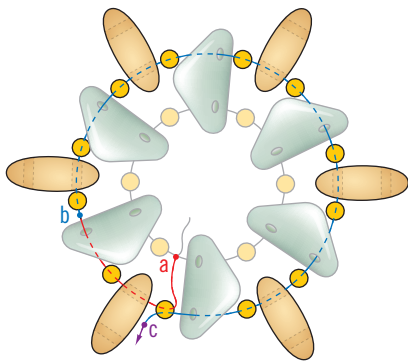


FIGURE 2

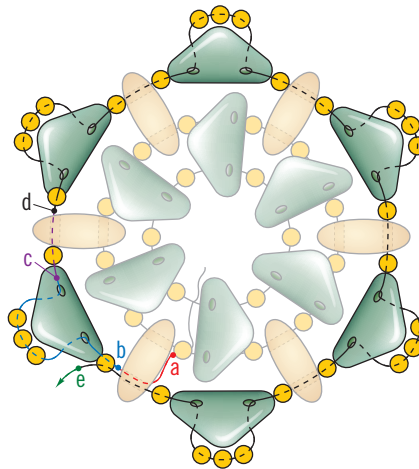


FIGURE 3

stepbystep

Components

[1] On 1 yd. (.9 m) of thread, pick up a repeating pattern of an 11° seed bead and a 6 mm two-hole triangle bead six times, making sure all the triangles are oriented the same way. Tie the beads into a ring with a square knot (Online Beading Basics), leaving a 6-in. (15 cm) tail (**figure 1**). Adjust the triangles so the available hole of each sits to the outside of the ring.

[2] Pick up an 11°, a 6 mm two-hole lentil bead, and an 11°, and sew through the available hole of the next triangle (**figure 2, a-b**). Repeat this stitch to complete the round, and sew through the first 11° added in this round (**b-c**).

[3] Sew through the available hole of the adjacent lentil (**figure 3, a-b**). Pick up an 11°, a triangle, and three 11°s, and sew through the available hole of the new triangle (**b-c**). Pick up an 11°, and sew through the available hole of the next lentil (**c-d**). Repeat these two stitches to complete the round, and sew through the first 11° added in this round (**d-e**). As you stitch, make sure

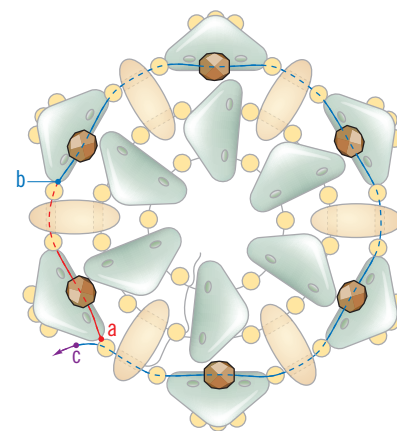


FIGURE 4

that each new triangle is pointing in the same direction as the previous triangle. If not, remove the stitch and re-do it with the triangle facing the correct way. **[4]** Pick up a 3 mm fire-polished bead, and sew through the next 11°, lentil, and 11° set (**figure 4, a-b**). Repeat this stitch to complete the round (**b-c**). **[5]** Sew through the next 3 mm and 11° (**figure 5, a-b**). Pick up three 11°s,

Difficulty rating



Materials

purple/bronze bracelet 7 in. (18 cm)

- 72 6 mm CzechMates two-hole triangle beads (regal, halo finish)
- 36 6 mm CzechMates two-hole lentil beads (matte metallic flax)
- 6 6 mm fire-polished beads (regal, halo finish)
- 36 3 mm fire-polished beads (bronze)
- 5 g 11° seed beads (Toho 999, gold-lined rainbow black diamond)
- clasp
- beading thread, size D or 6 lb. test
- beading needles, #11 or #12

green/bronze bracelet colors:

- 6 mm CzechMates two-hole triangle beads (heavens, halo finish)
- 6 mm CzechMates two-hole lentil beads (matte metallic flax)
- 6 mm fire-polished beads (heavens, halo finish)
- 3 mm fire-polished beads (bronze)
- 11° seed beads (Toho 999, gold-lined rainbow black diamond)

Nichole Starman has been an integral part of the beading community for 13 years as a wholesaler of Czech glass.



Nichole loves the infinite possibilities of using bead colors to create works of art. Contact Nichole at (360) 683-3399 or via www.czechbeads.com.

www To brush up on the Online Beading Basics referenced in this story (plus other techniques!), go to www.BeadAndButton.com/basics.



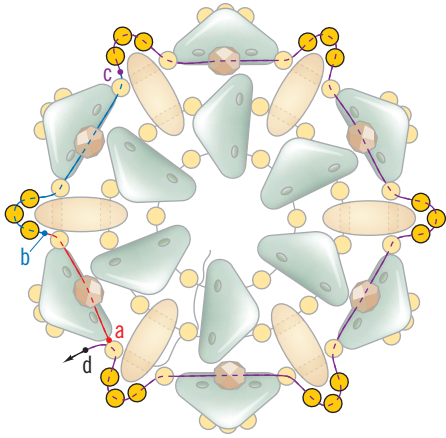


FIGURE 5

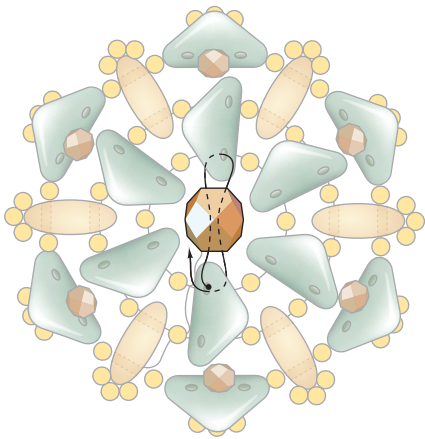
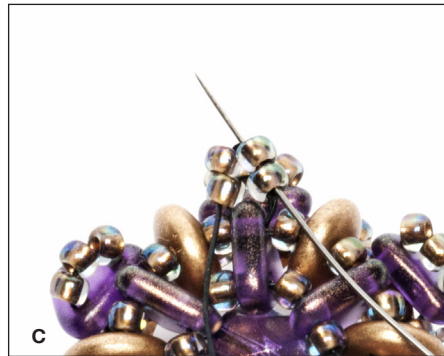


FIGURE 6

and sew through the next 11°, 3 mm, and 11° (b–c). Repeat this stitch to complete the round, sewing through just an 11° in the final stitch (c–d). Set the working thread aside.

[6] With the tail exiting the front of the component, pick up a 6 mm fire-polished bead, and sew through the opposite triangle. Sew back through the 6 mm and the first triangle again (figure 6). End the tail (Online Basics) but not the working thread.

[7] Repeat steps 1–6 to make a total of six components.



Assembly

[1] With the working thread from a component, sew through the beadwork to exit the outer hole of a triangle in the inner round (photo a). You'll find it easiest to access this triangle from the back of the component. Pick up two 11°, and sew through the triangle and the first 11° just added (photo b).

[2] Pick up two 11°, sew down through the adjacent 11°, sew up through the 11° your thread exited at the start of this step, and continue through the first 11° just added (photo c). Repeat this stitch four times, and then sew through the outer hole of an inner-round triangle on another component and back through the adjacent 11° (photo d). Retrace the thread path through the connection a few times, and end the thread.

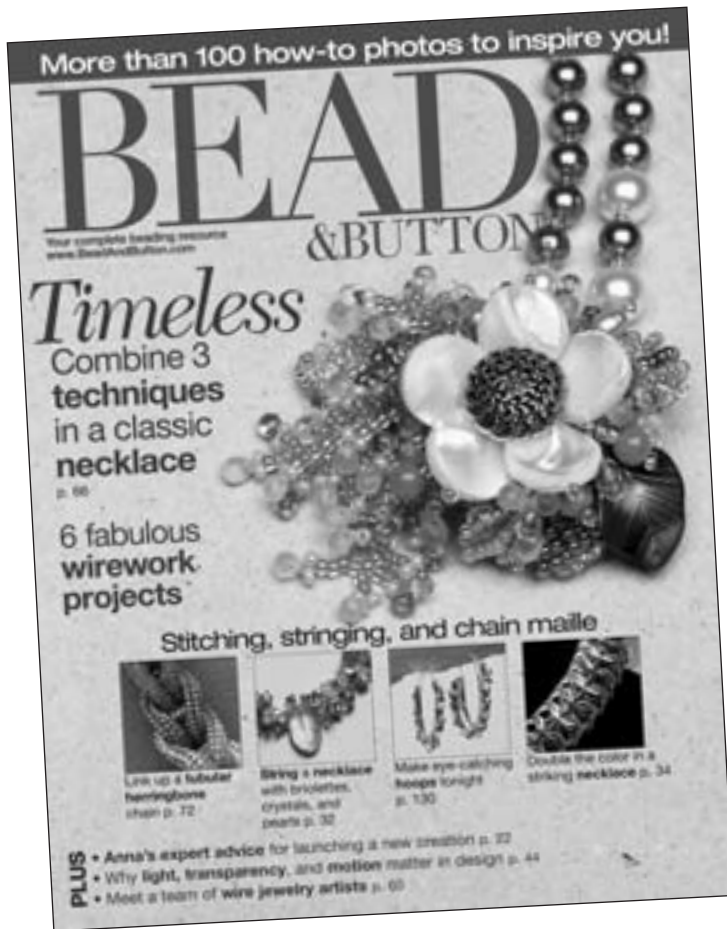
[3] Repeat steps 1 and 2 to connect all the components in a straight line.

[4] Add 1 ft. (30 cm) of thread (Online Basics) to an end component, exiting opposite the existing connection. Work as in steps 1 and 2, but instead of sewing through a triangle on a new component, pick up half of the clasp. Retrace the thread path through the clasp connection several times, and end the thread (photo e).

[5] Repeat step 4 at the other end of the bracelet. ●



Get Over 100 New Projects This Year



Bead&Button magazine is your complete beading resource.

Subscribe today to...

- Learn new techniques!
- Expand your beading skills!
- Get scores of projects ranging from basic to advanced!

Projects use a variety of stitches, including peyote, herringbone, ladder, bead crochet, and more. All projects are fully tested and include instructions you can count on!

Plus, subscribers have exclusive online access! Post photos of your work in the Subscriber Gallery and download free projects and patterns.

Subscribe to *Bead&Button* Today!

Visit www.BeadAndButton.com/promo

Enter promotional code: **IK87D**

Or call 1-800-533-6644

Mon. – Fri., 8:30am – 4:30pm Central Time. Outside the U.S. and Canada, call 262-796-8776, x661.